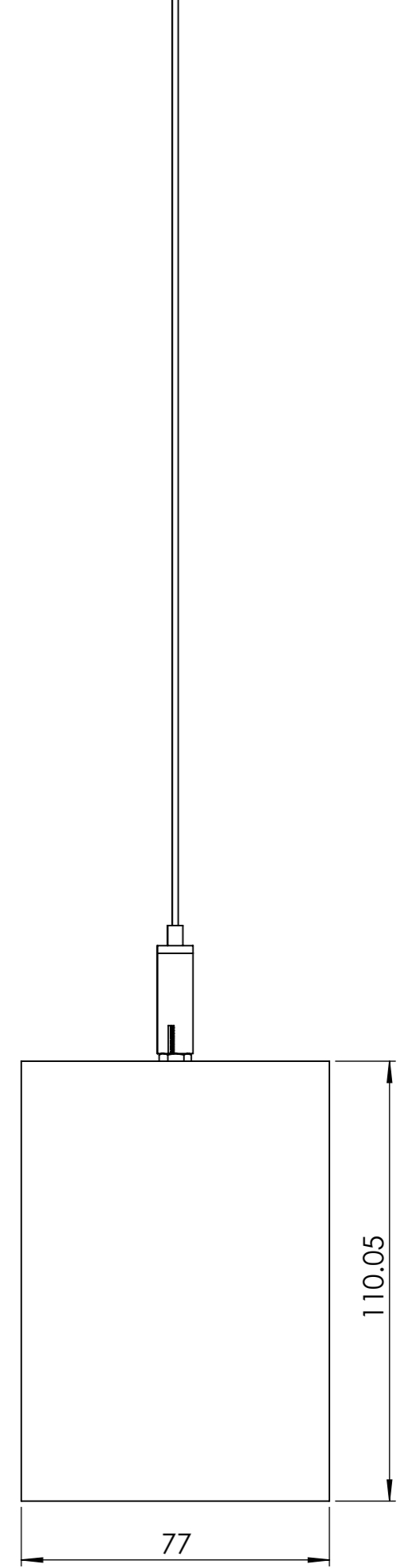
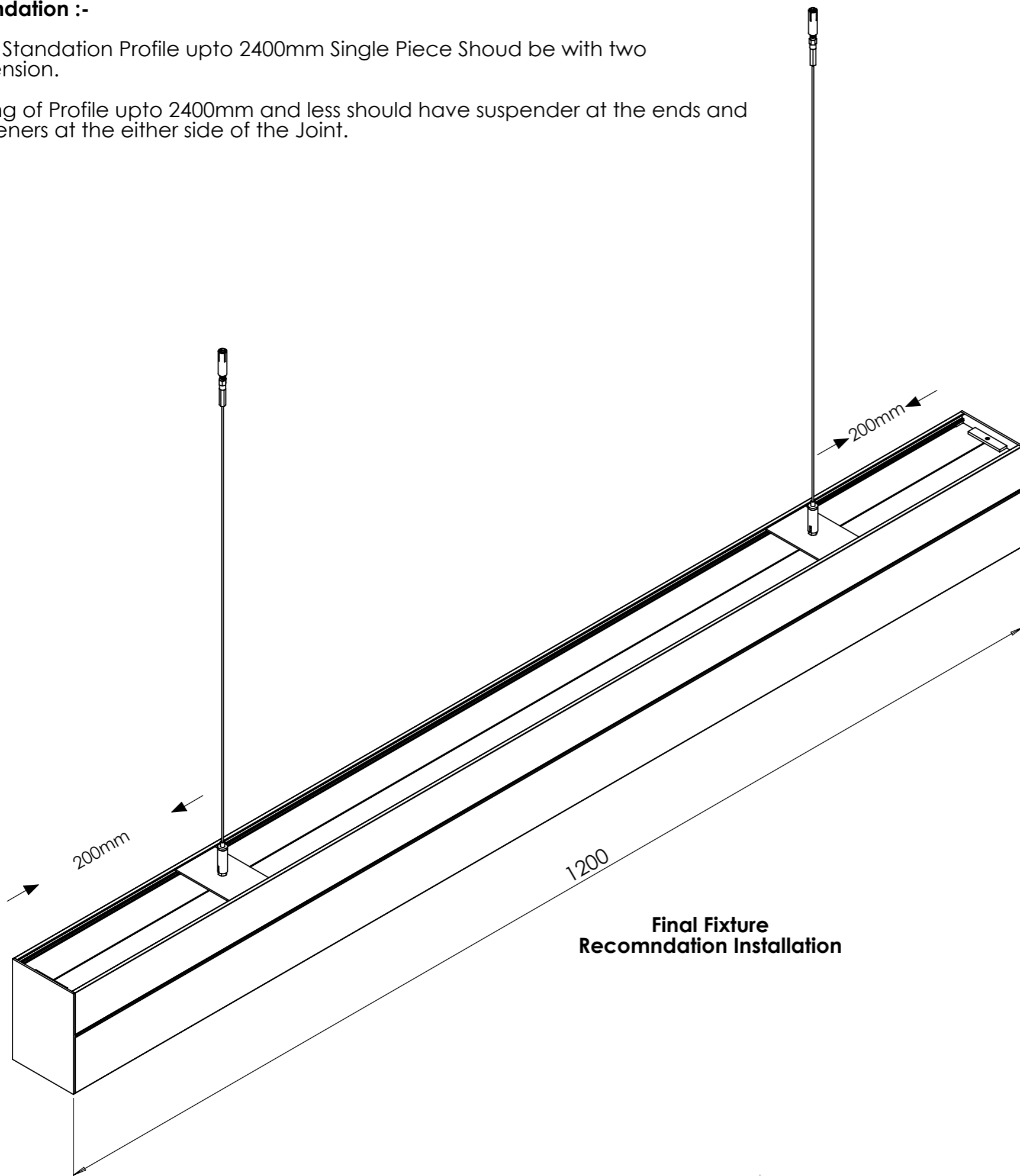


**Recomndation :-**

- 1) Each Standation Profile upto 2400mm Single Piece Shoud be with two Suspension.
- 2) Joining of Profile upto 2400mm and less should have suspender at the ends and Suspeners at the either side of the Joint.



**Assembly of Complete Part into a Luminaire.**

**Finished Profile in Bottom Opening :-**

1. Remove End Cap Grab Screw
2. Remove End Cap
3. Remove Insert

**Our Product Comes in Assembled Format side.  
This is Just an Pictovial Presentantion of our Profile Assembly.**

**End Cap**  
(Screwing Of end Cap in Required)

Grab Screw

Wire

**Driver**  
( Cabling Part in without )

End Cap

Outer Profile

Insert

Lens with PCB

**Disintegration of Luminaire into part for Maintance of Drive & LED :-**

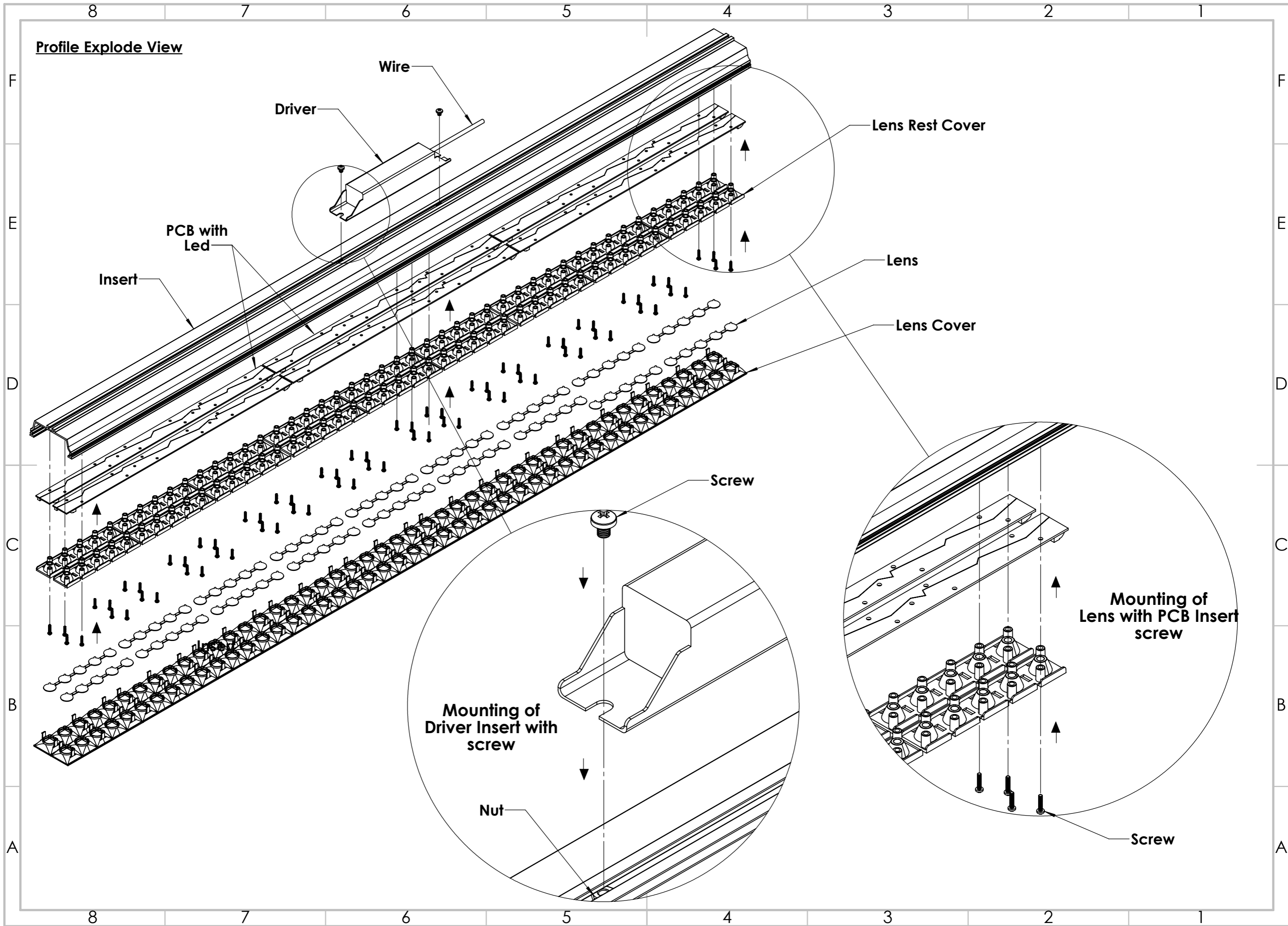
**1. Drive:-**

- End Cap Grab screw Remove
- End Cap Remove
- Insert Removal From Below
- Acces Driver
- Remove Wire Connection
- Unscrew Driver
- Put New Driver
- Screw New Driver
- Wire Connection Indriver
- Put Insert Back Into Outer Profile
- Finished Cap

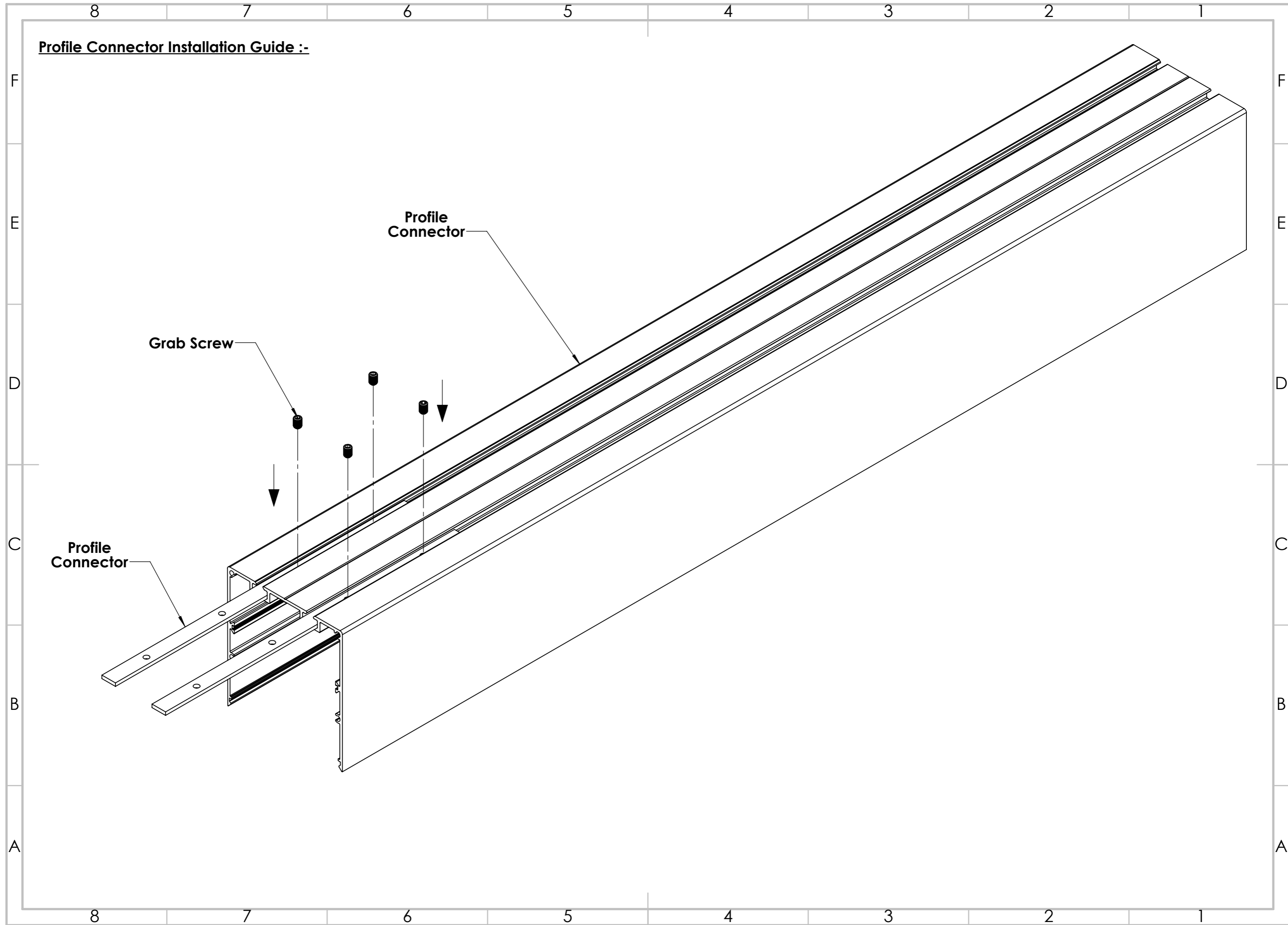
**2. LED:-**

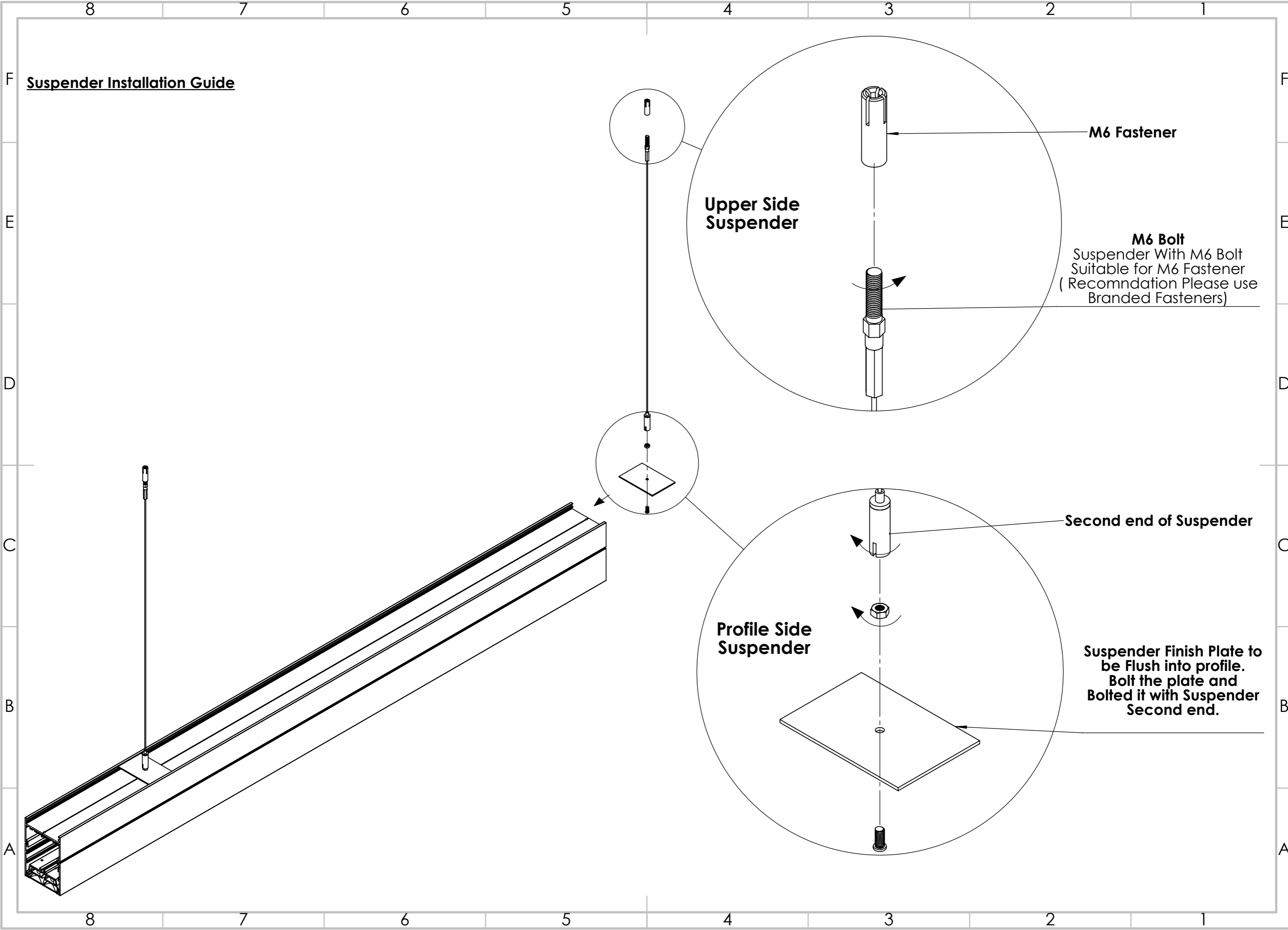
- End Cap Grab screw Remove
- End Cap Remove
- Insert Removal From Below
- Remove Connect Wire From Wago connector
- Unscrew Lens With PCB
- Remove PCB
- Add New PCB with heat tap on back side
- Connection Again
- Put Lens With PCB Back
- Put Insert into Outer Profile
- Fix End Cap

**Profile Explode View**



**Profile Connector Installation Guide :-**





**Suspender Installation Guide**

**Upper Side  
Suspender**

**M6 Fastener**

**M6 Bolt**  
Suspender With M6 Bolt  
Suitable for M6 Fastener  
( Recommendation Please use  
Branded Fasteners)

**Second end of Suspender**

**Profile Side  
Suspender**

**Suspender Finish Plate to  
be Flush into profile.  
Bolt the plate and  
Bolted it with Suspender  
Second end.**

F  
E  
D  
C  
B  
A

8 7 6 5 4 3 2 1

8 7 6 5 4 3 2 1